

220504-1-384  
Machbarkeitsstudie 2  
Vorkonzept Siegerlandmuseum  
Burgstraße

---

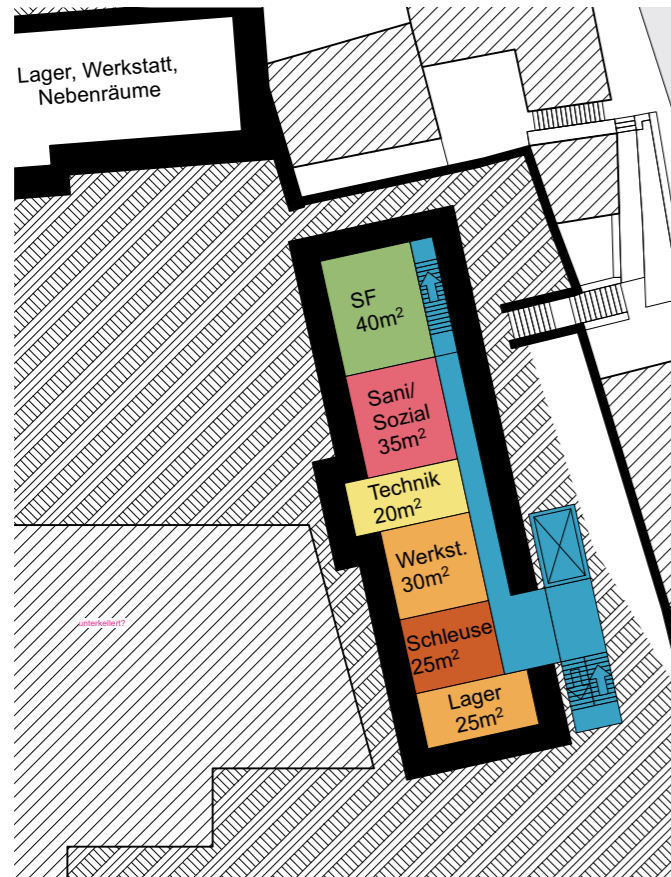
**architektur im modulbüro**  
Wagener + Görg GbR

Siebergstraße 73 | 57072 Siegen

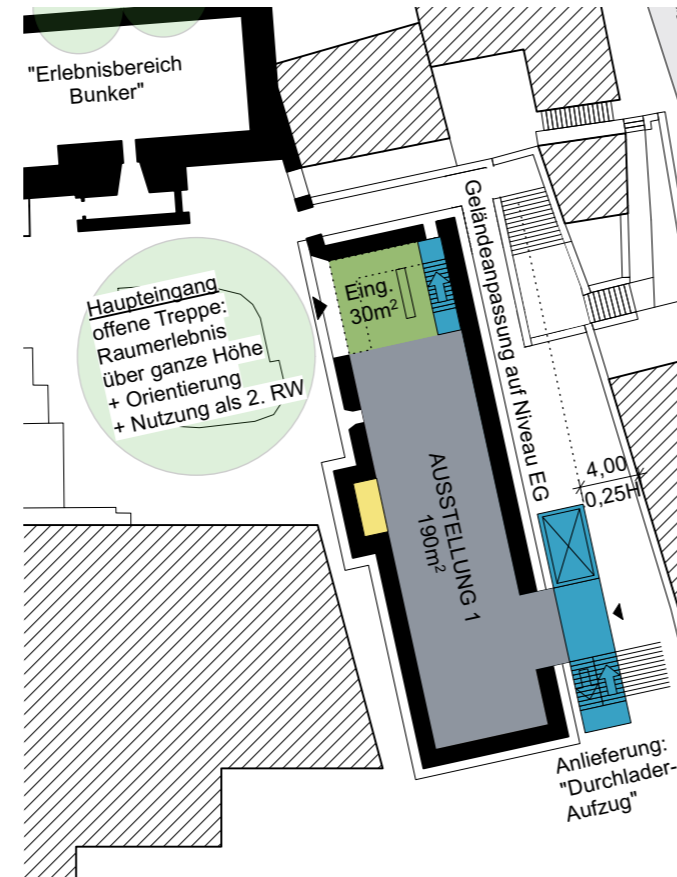
Tel. 0271 233749-10  
Fax 0271 233749-49  
Mail [architektur@modulbuero.de](mailto:architektur@modulbuero.de)

Vertretungsber. Gesellschafter  
Thorsten Wagener, AKNW 36 101  
Alex Görg, AKNW 101 358

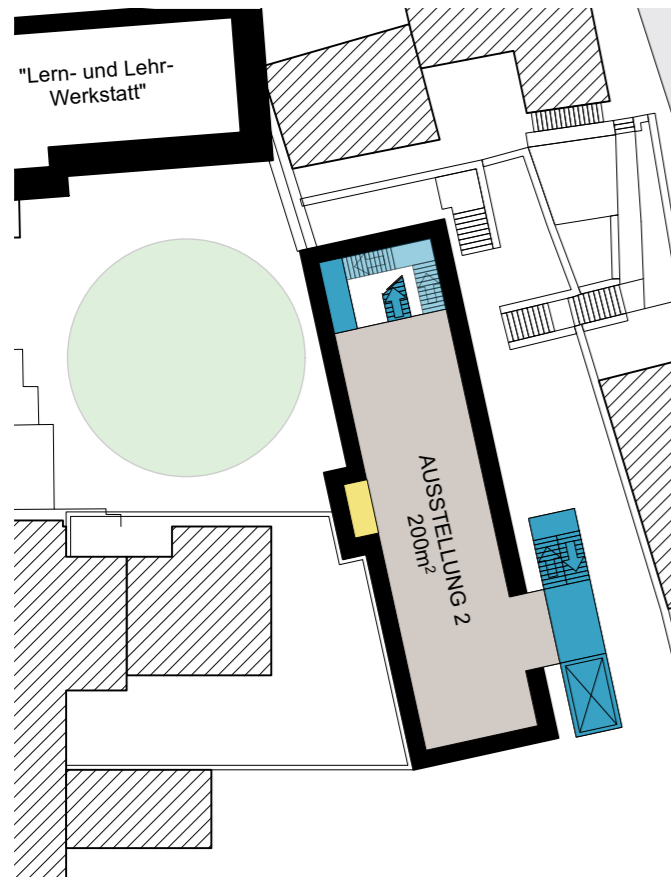
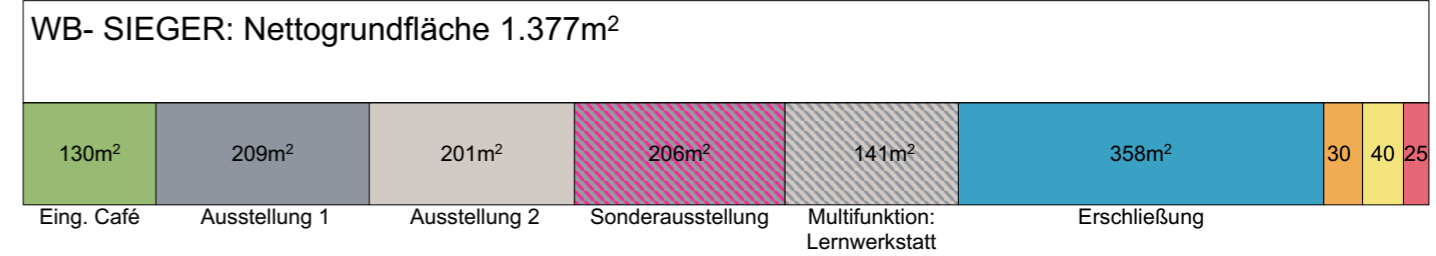
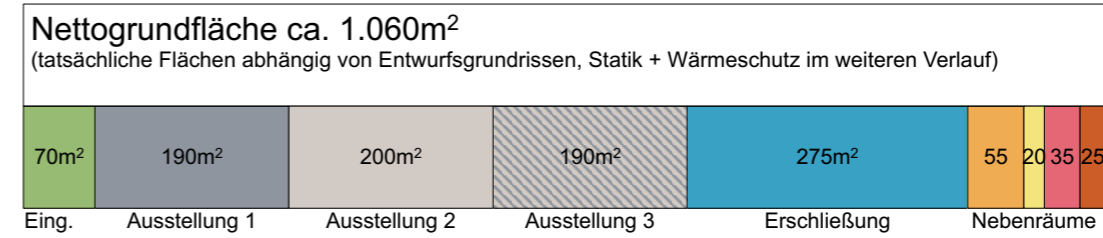
**[www.modulbuero.de](http://www.modulbuero.de)**



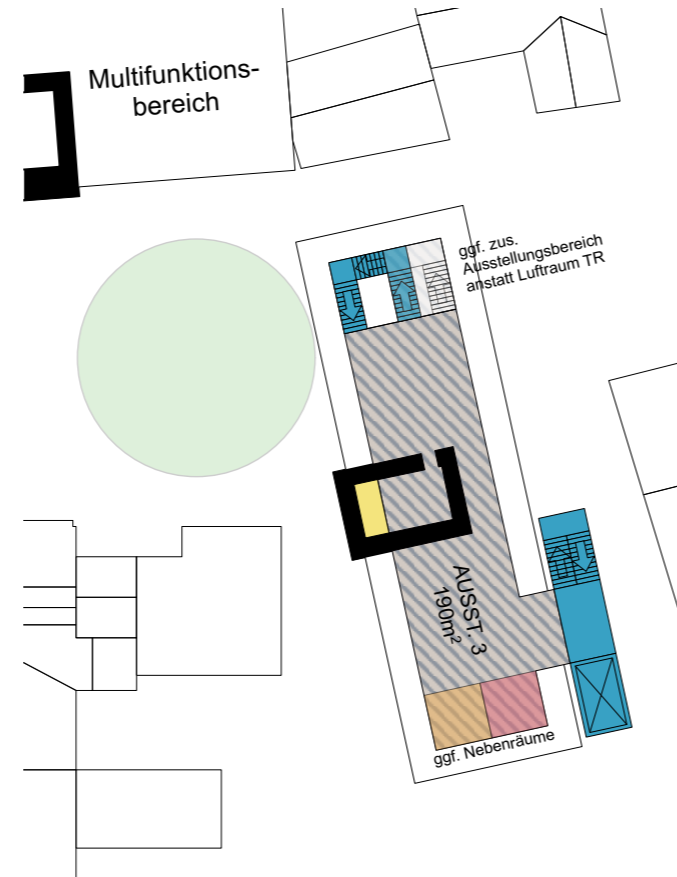
EBENE -1



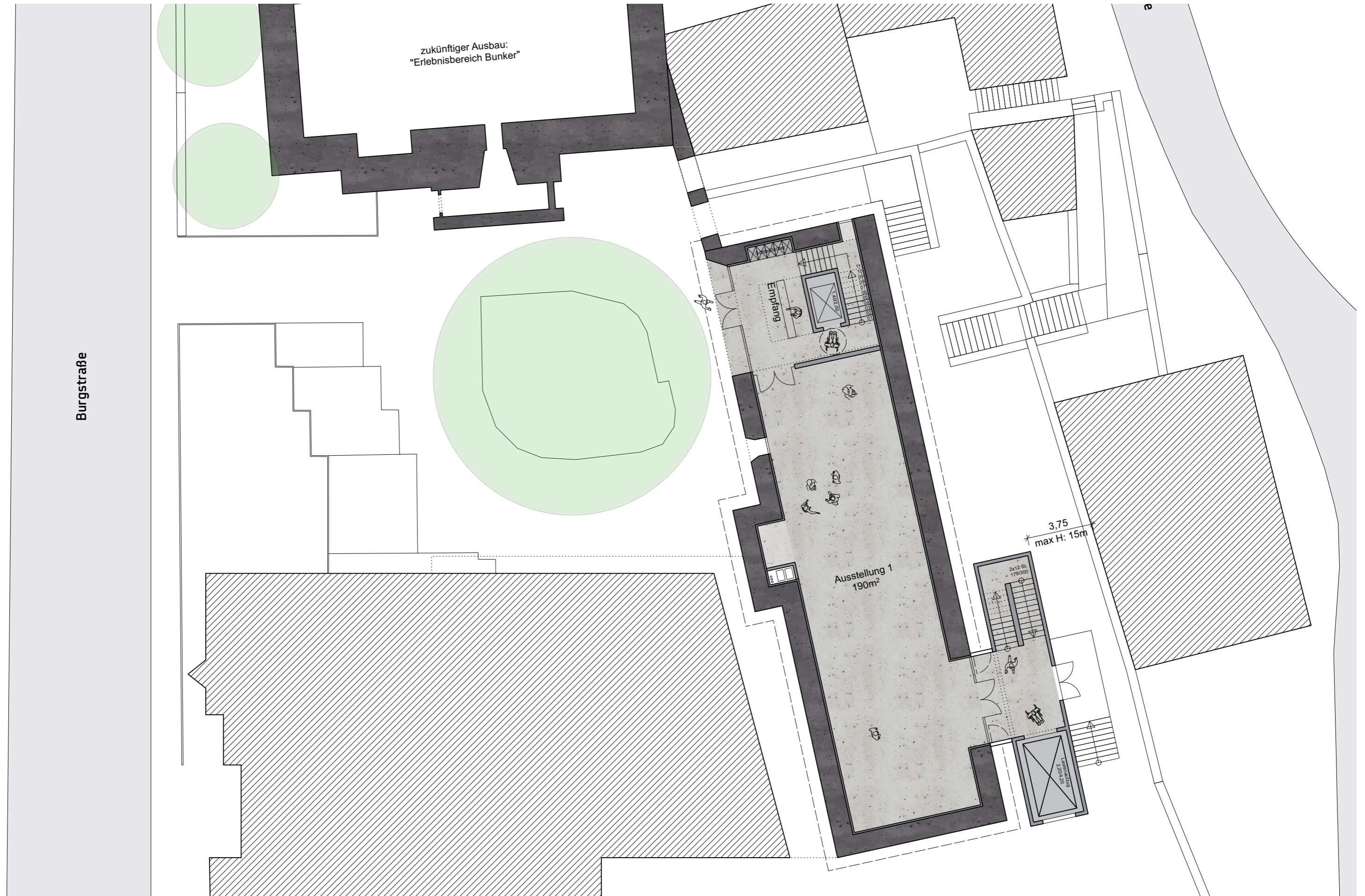
EBENE 0

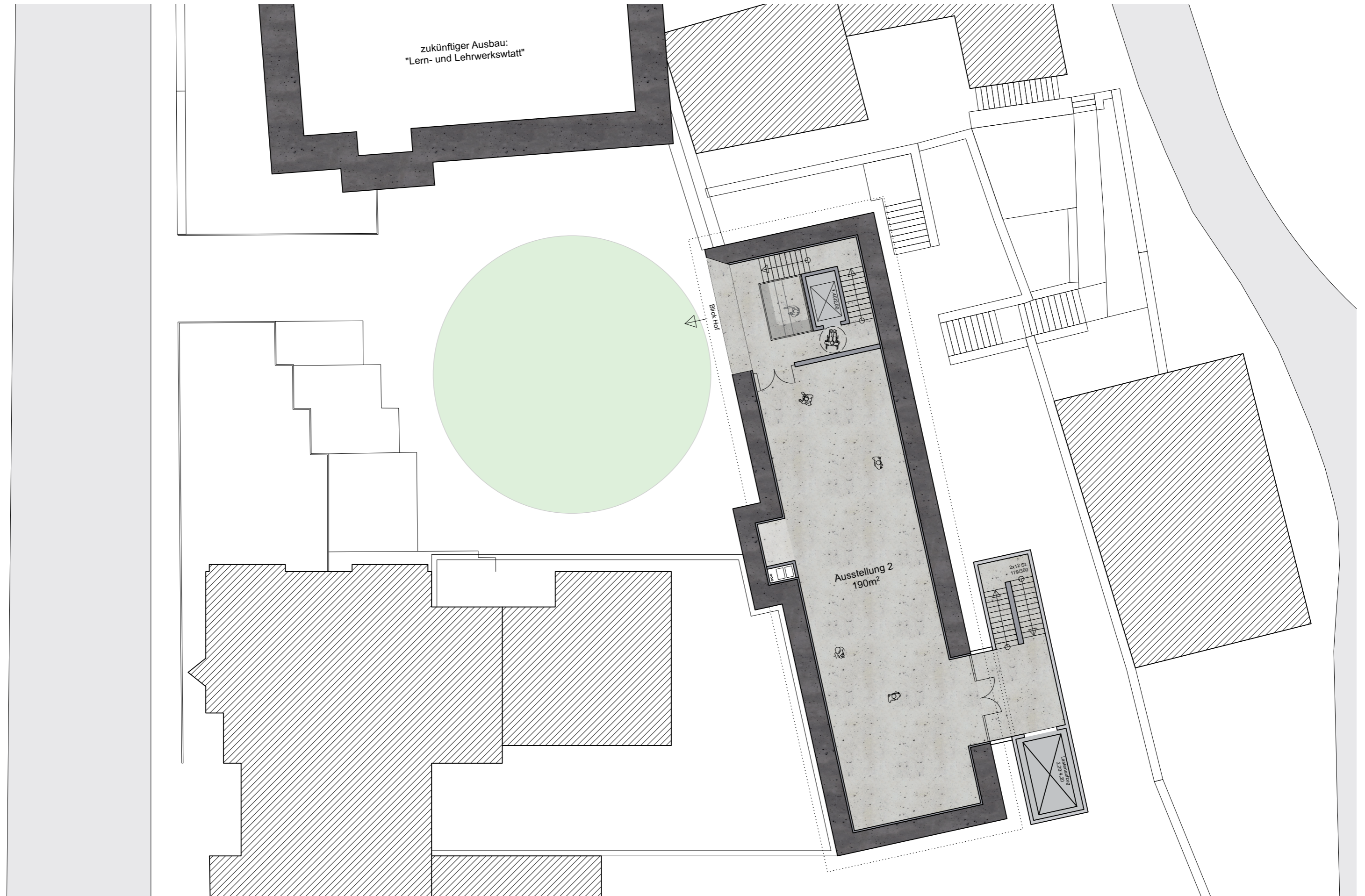


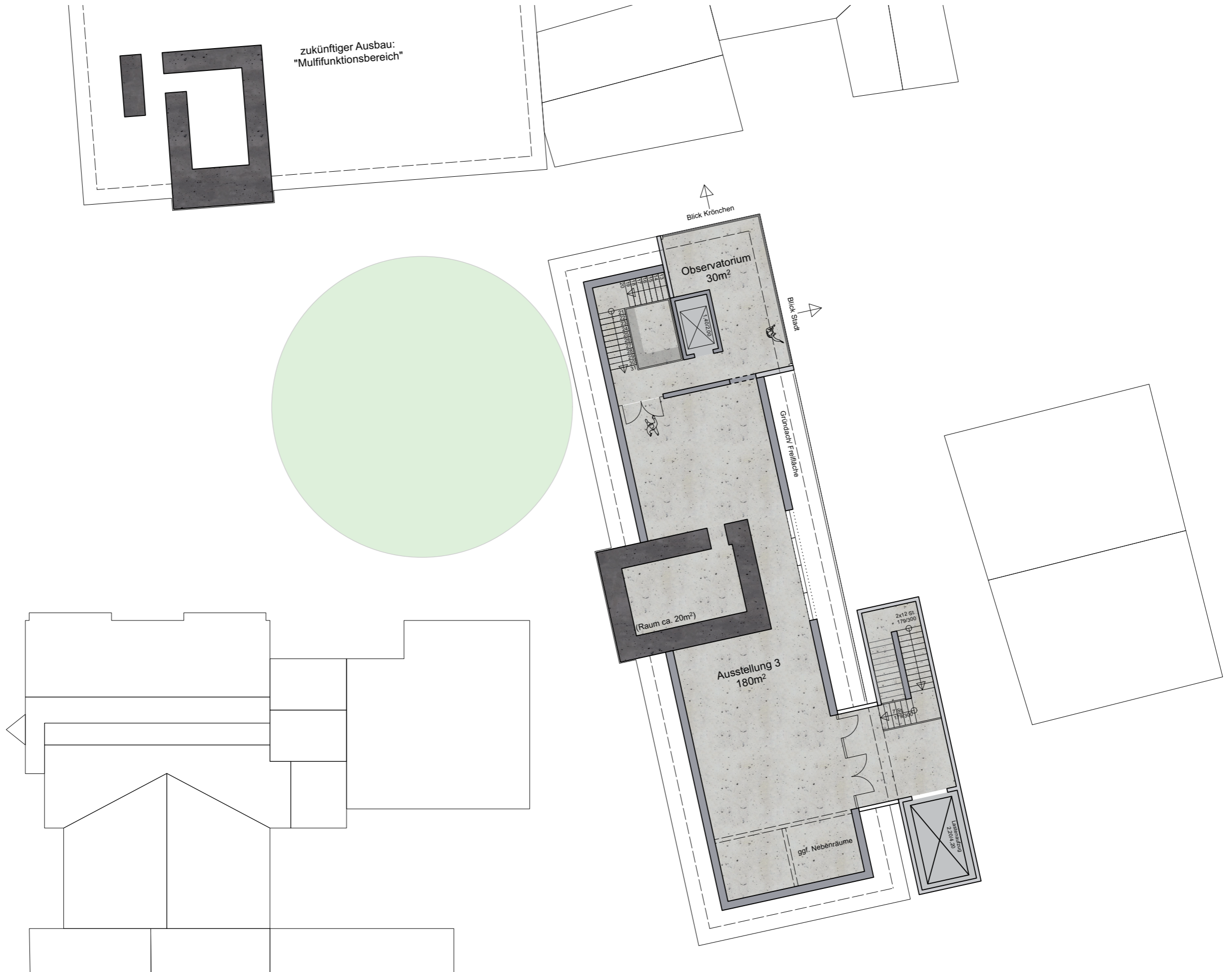
EBENE +1

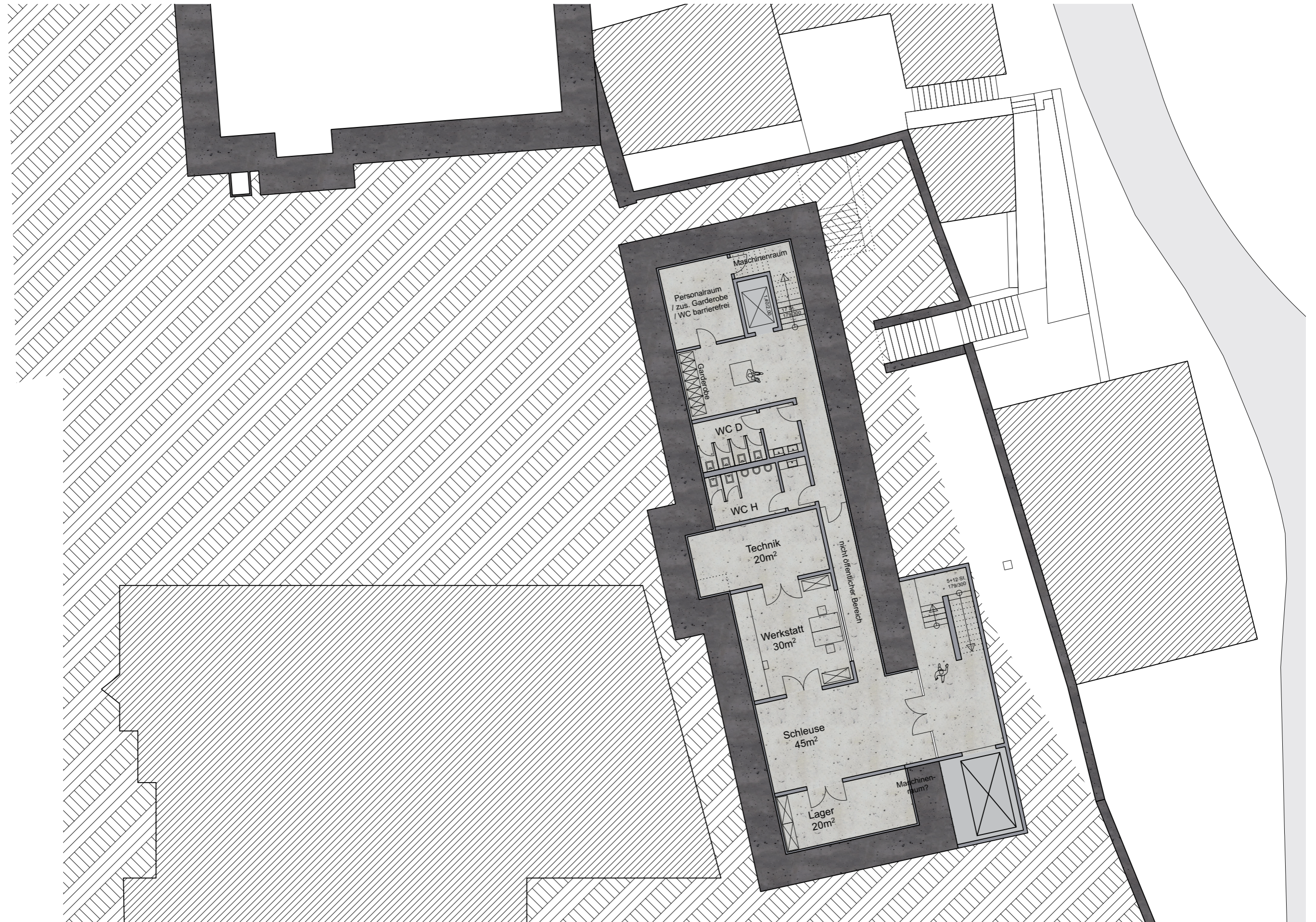


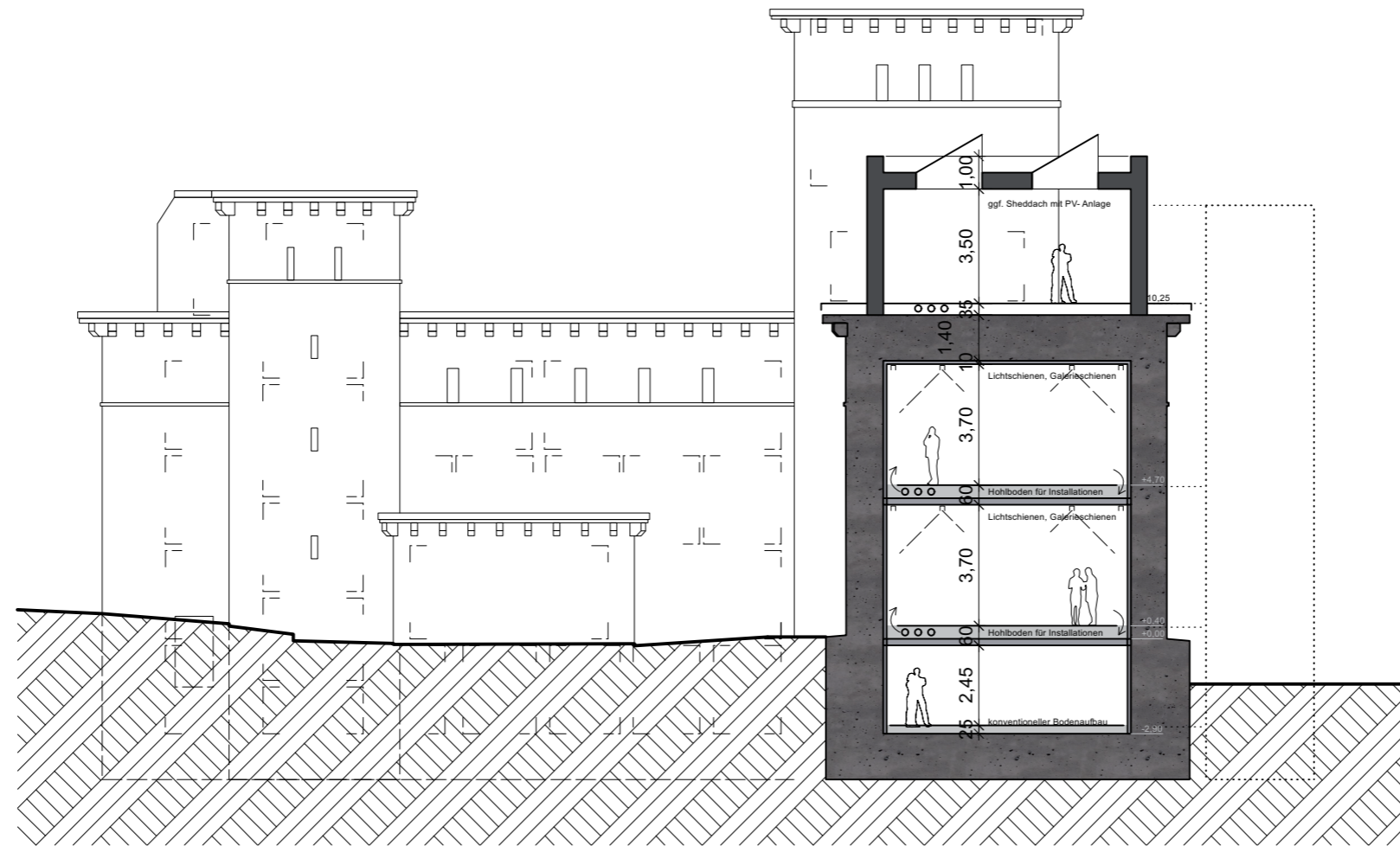
EBENE +2

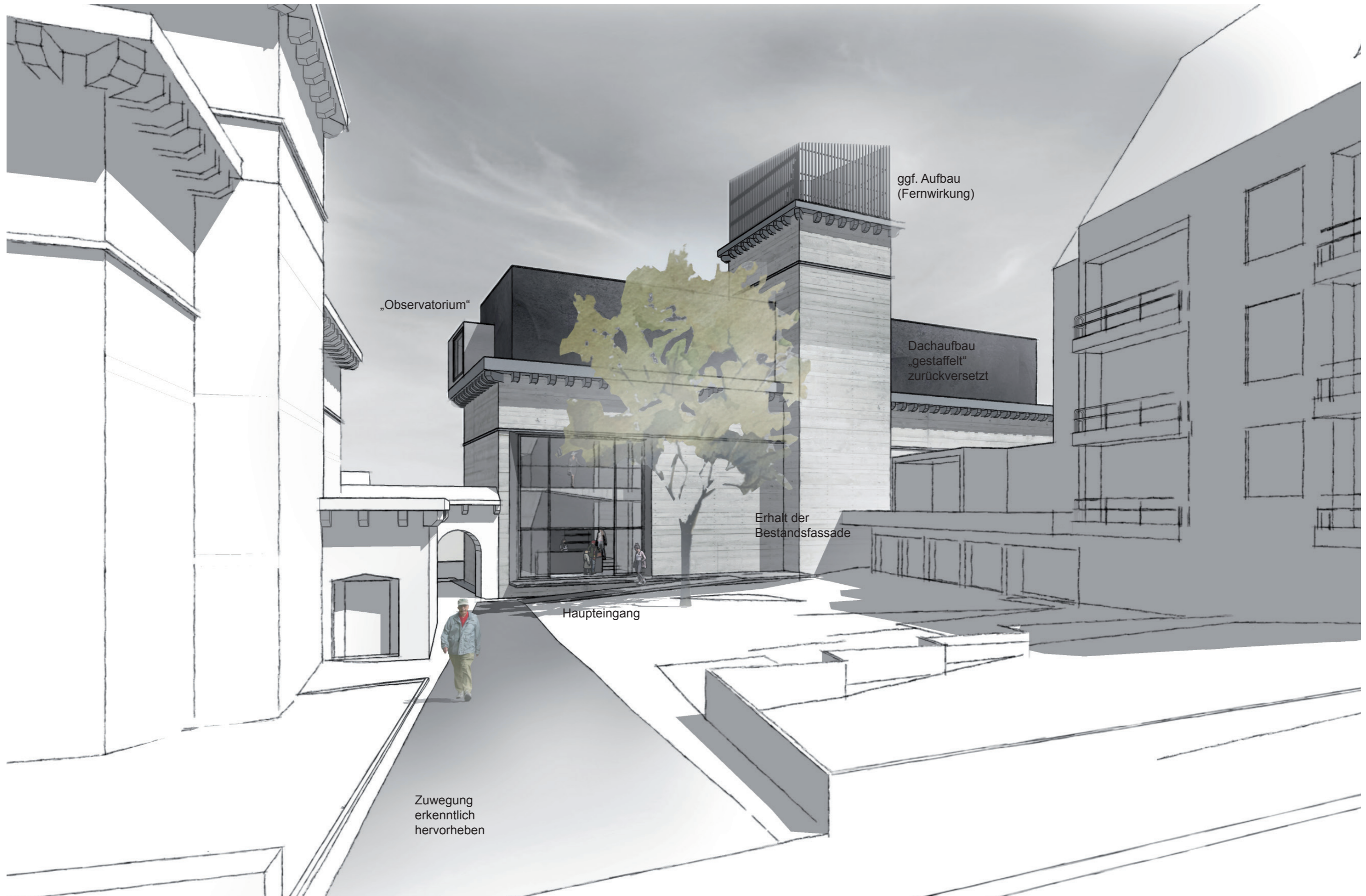


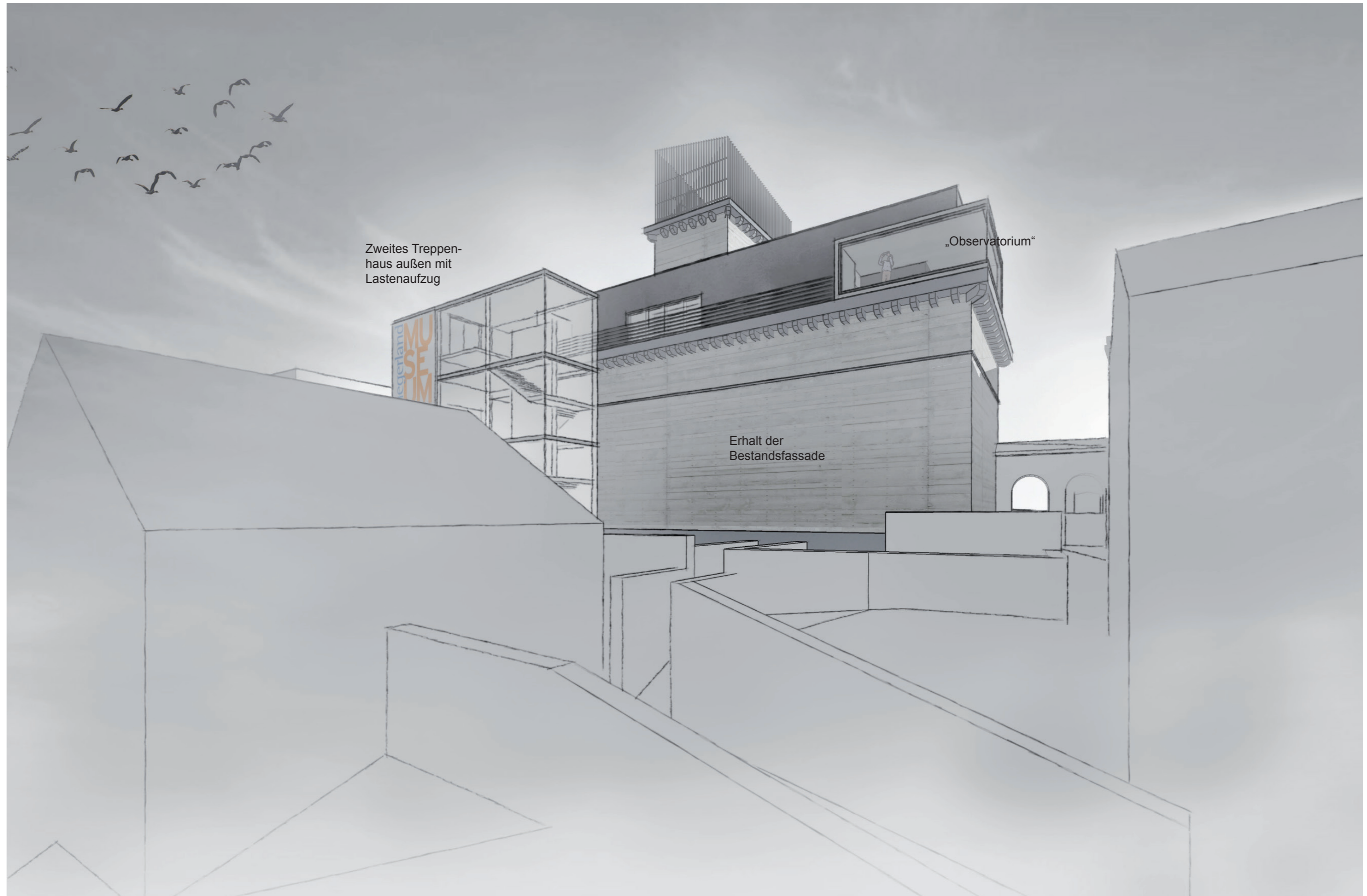


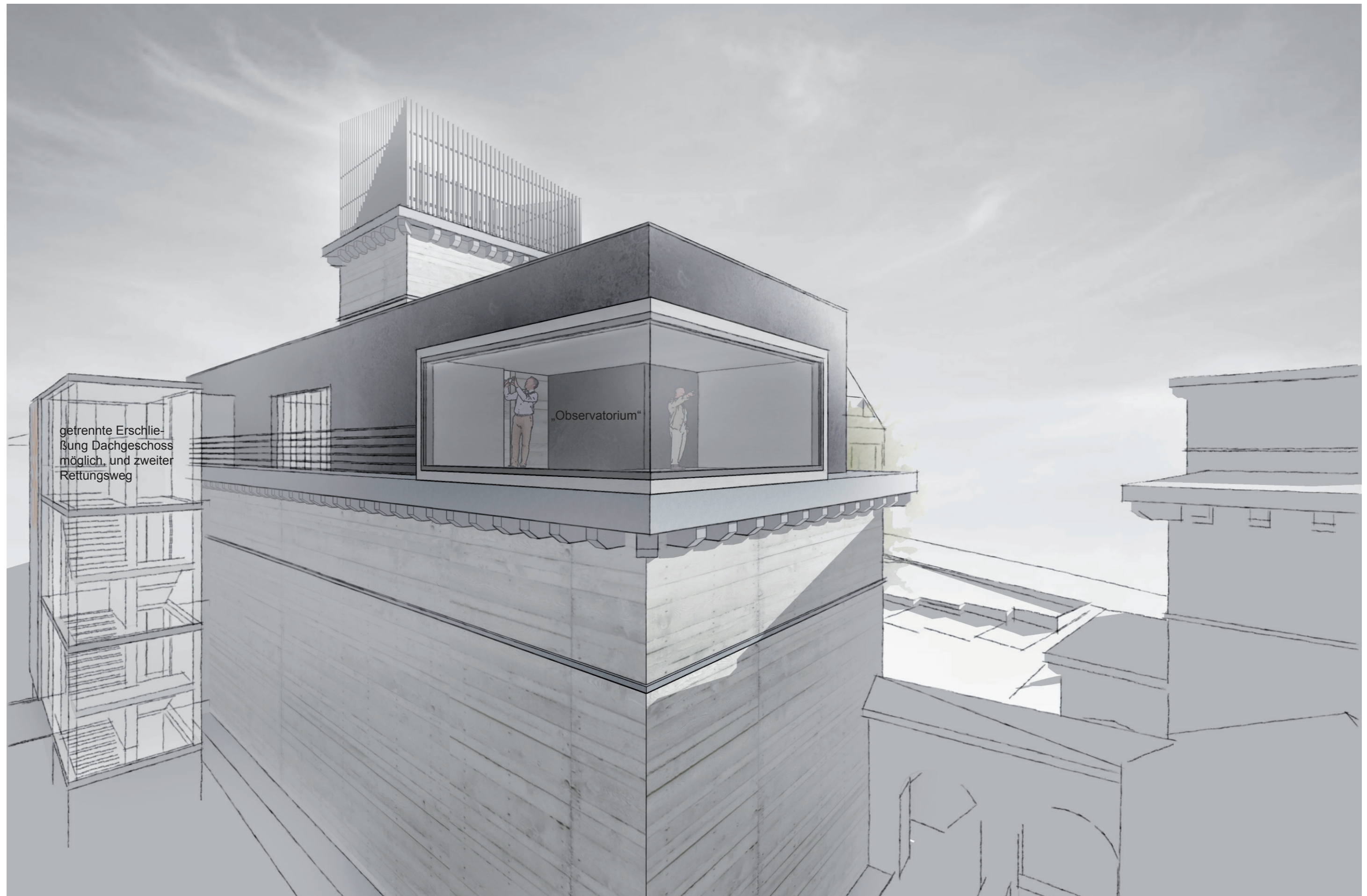












getrennte Erschließung Dachgeschoss möglich, und zweiter Rettungsweg

„Observatorium“

